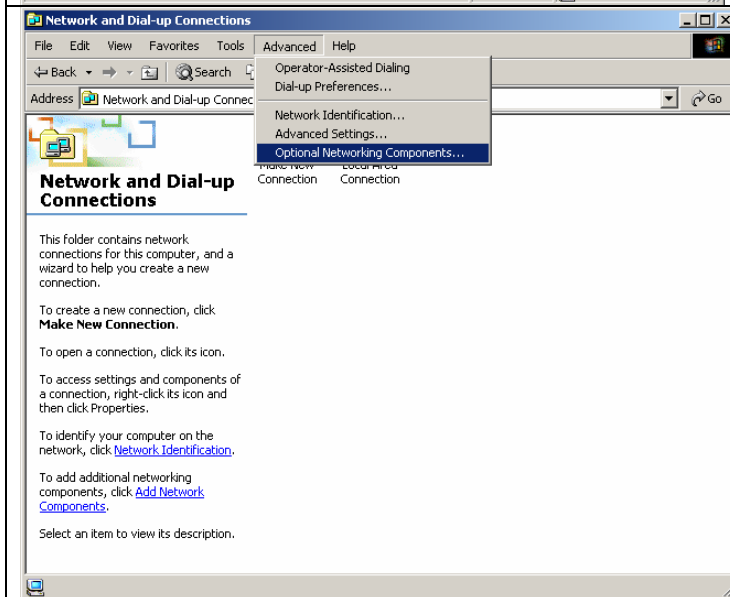
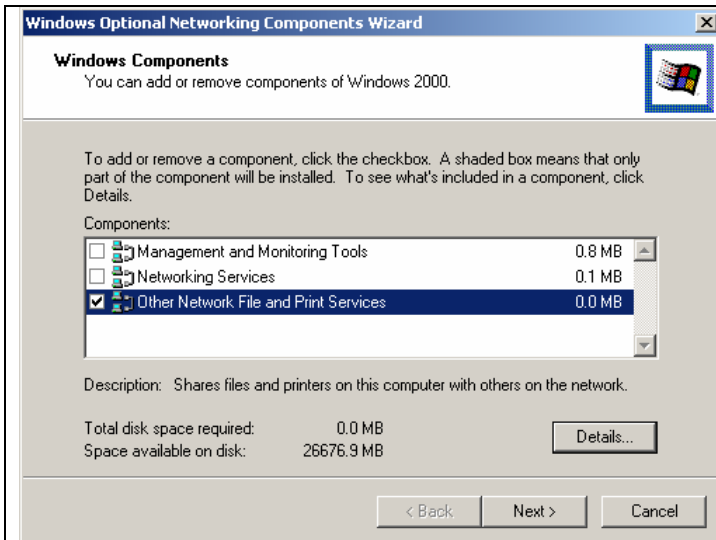


First we need to install the optional networking components which provides the service required for LPR Ports.

Click **Start** then **Control Panel**. Once you're inside the control panel, double-click on **Network Connections**.

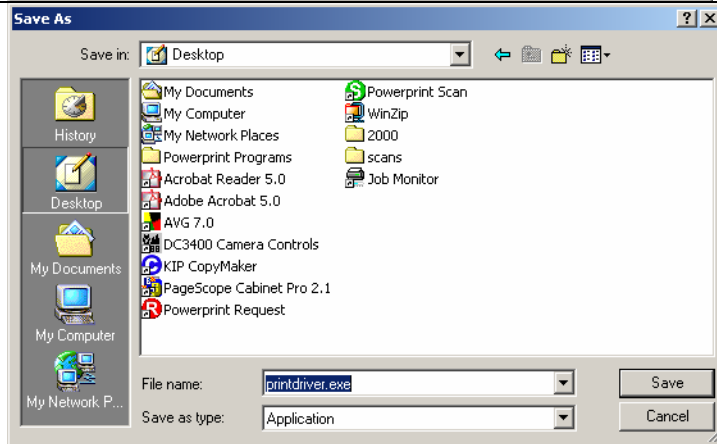


From the advanced tab, select **Optional Networking Components**

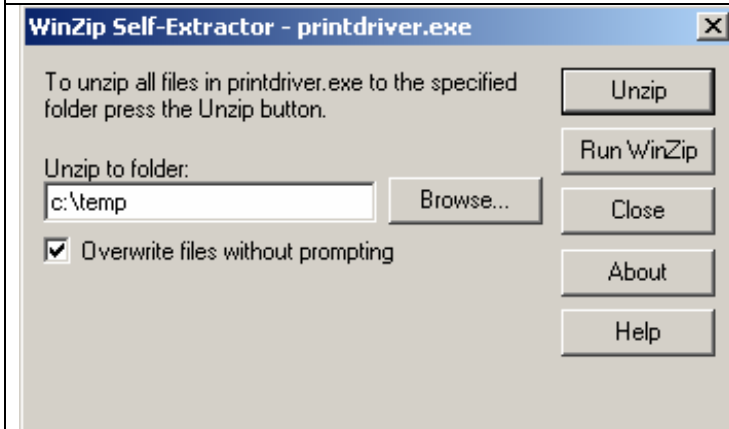


Select **Other Network File and Print Services**.

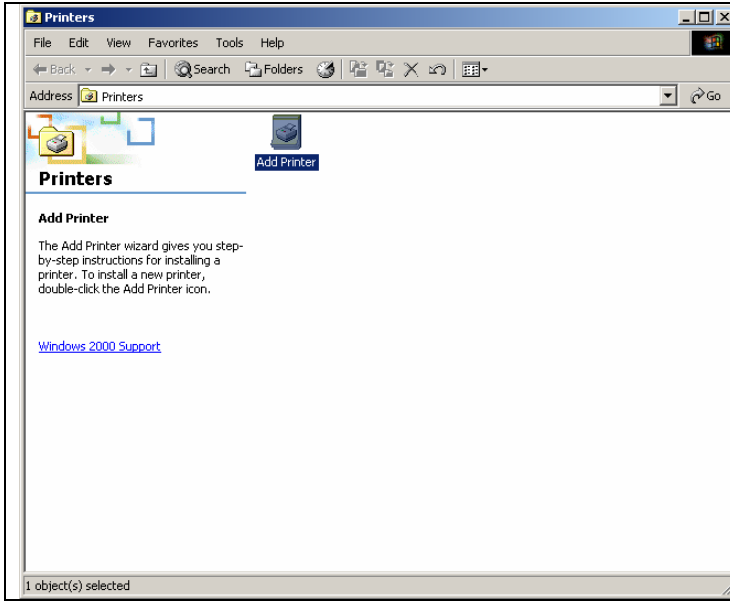
Click on **Next** and follow the prompts.



We will give you a printer driver to install, make sure you save it to your desktop.



Double click the saved file and unzip it to the default location.



Click **Start** then **Printers and Faxes** and click the **Add Printer** icon.



The "Add Printer Wizard" opens, click on **Next**.

**Add Printer Wizard**

**Local or Network Printer**  
Is the printer attached to your computer?

If the printer is directly attached to your computer, click Local printer. If it is attached to another computer, or directly to the network, click Network printer.

Local printer  
 Automatically detect and install my Plug and Play printer  
 Network printer

< Back   Next >   Cancel

Select "Local printer" and click on **Next**.

(Make sure the box for 'Automatically detect and install my Plug and Play printer' is unchecked.)

**Add Printer Wizard**

**Select the Printer Port**  
Computers communicate with printers through ports.

Select the port you want your printer to use. If the port is not listed, you can create a new port.

Use the following port:

Port	Description	Printer
LPT1:	Printer Port	PaperPort PDF, KONICA MIN...
LPT2:	Printer Port	
LPT3:	Printer Port	Di5510
COM1:	Serial Port	
COM2:	Serial Port	
COM3:	Serial Port	

Note: Most computers use the LPT1: port to communicate with a local printer.

Create a new port:  
 Type:

< Back   Next >   Cancel

Select **Create a new port**.

Where it says "Type of port", change that to **LPR Port**.

(If LPR Port is not an option, please start from the beginning of this file.)

**Add Printer Wizard**

**Select the Printer Port**  
Computers communicate with printers through ports.

**Add LPR compatible printer**

Name or address of server providing lpd:    OK

Name of printer or print queue on that server:    Cancel

Help

COM2: Serial Port  
COM3: Serial Port

Note: Most computers use the LPT1: port to communicate with a local printer.

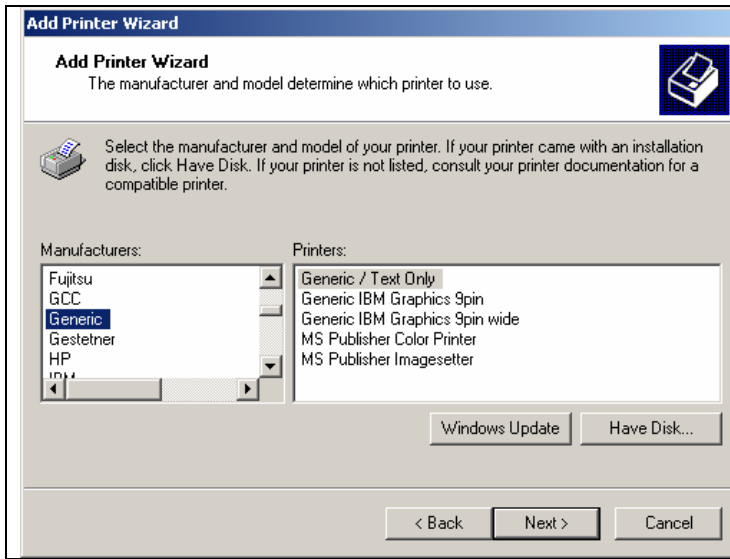
Create a new port:  
 Type:

< Back   Next >   Cancel

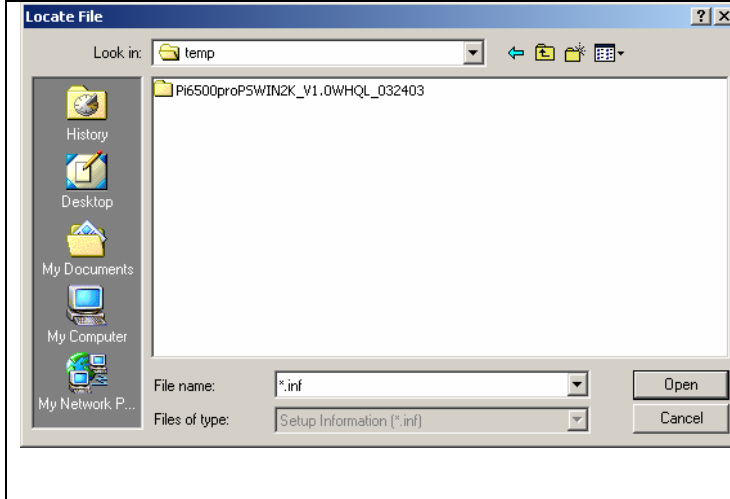
In the first box, type in the IP address of your copier. If you are unsure of what the copiers IP address is, ask your network administrator.

In the second box, type in **print** (Make sure 'print' is in lowercase.)

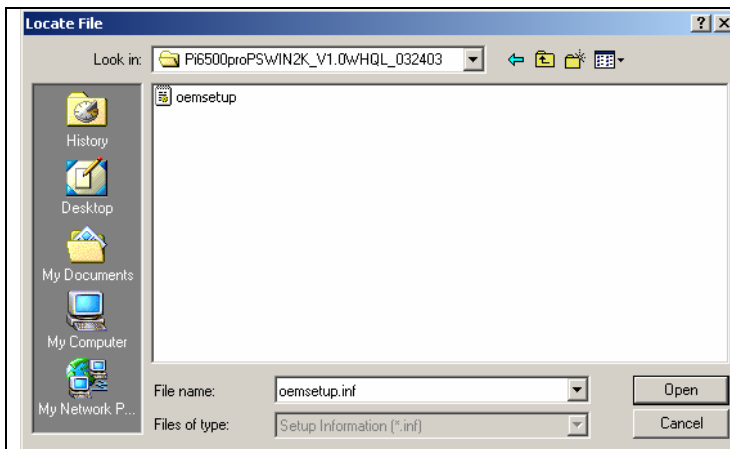
Click **OK**



Click on **Have Disk**.



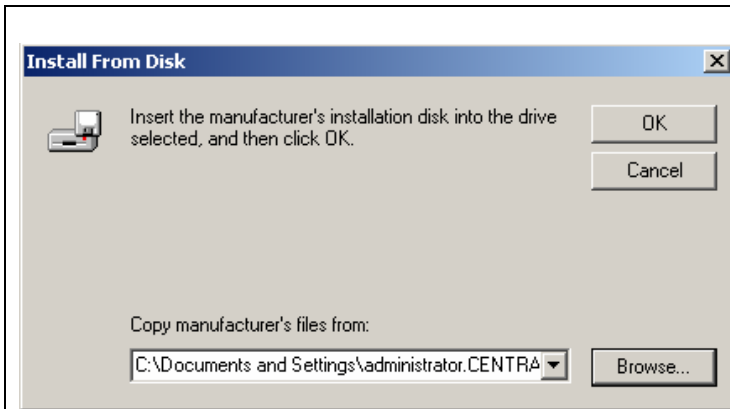
Locate the printer driver folder you unzipped previously and double click on it.



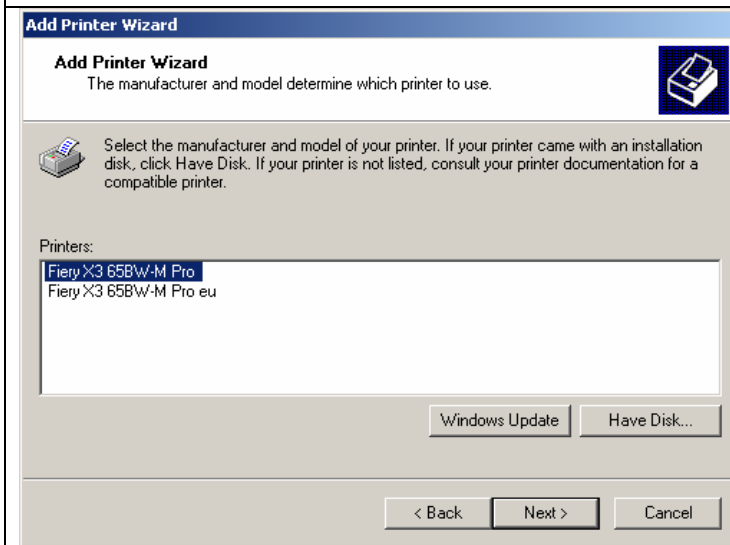
Double the folder that is the model of your printer.

For example, if your printer is a Di2010, click the Di2010 folder.

Click **Open**.

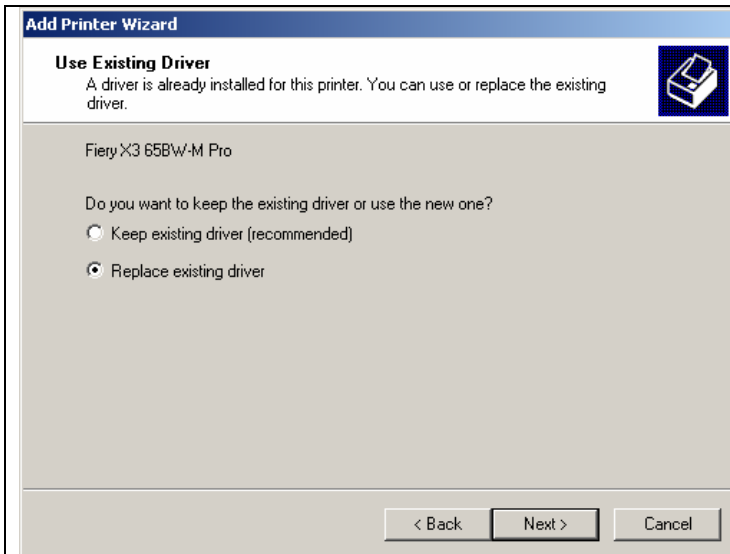


Click **OK**.



Click on **Next**.

Note: The driver with the “eu” at the end is for Europe. Do not select that one.



Select **Replace existing driver**.

Click on next.

Note: If you do not see this screen, skip this step and move to the next.

**Add Printer Wizard**

**Name Your Printer**  
You must assign a name for this printer.

Supply a name for this printer. Some programs do not support server and printer name combinations of more than 31 characters.

Printer name:

Do you want your Windows-based programs to use this printer as the default printer?

Yes  
 No

< Back   Next >   Cancel

Type in a name for the printer.

Click **Next**.

**Add Printer Wizard**

**Printer Sharing**  
You can share this printer with other network users.

Indicate whether you want this printer to be available to other users. If you share this printer, you must provide a share name.

Do not share this printer  
 Share as:

< Back   Next >   Cancel

If you are installing the printer to a workstation, then select **Do not share this printer**.

If you are installing the printer onto a server, then select **Share** and type in a share name.

**Add Printer Wizard**

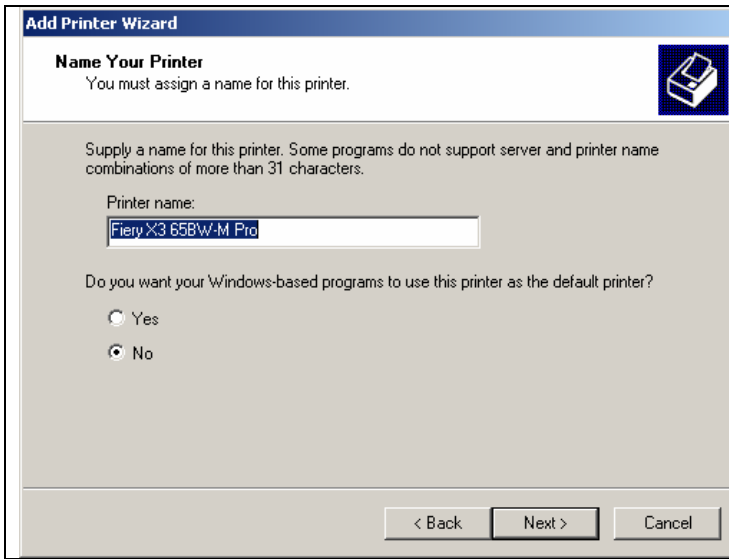
**Print Test Page**  
To confirm that the printer is installed properly, you can print a test page.

Do you want to print a test page?

Yes  
 No

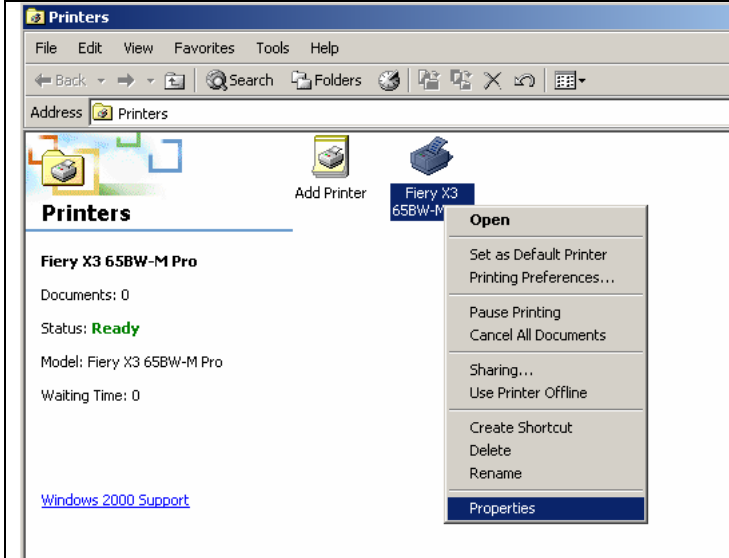
< Back   Next >   Cancel

Select **Yes** for a test page and click **Next**.



Click **Finish** to close the Wizard.

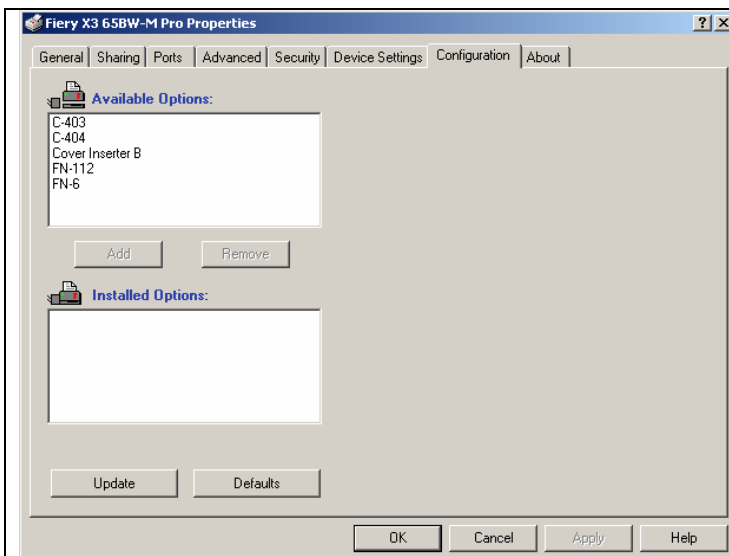
Note: “Digital Signature Not Found” message may appear. Just click **Yes** to complete the installation.



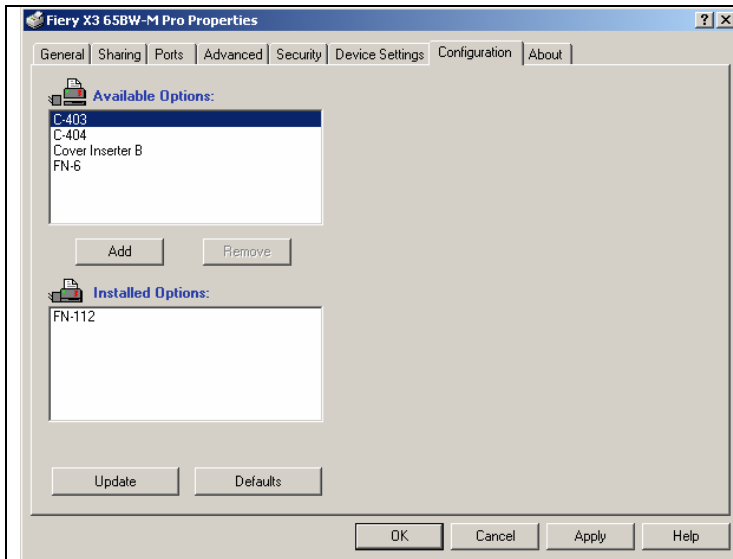
Now we need to configure the printer driver for any installable options you may have.

Click **Start** then **Settings** then **Printers**.

Right click the printer you have just installed and select **Properties**



Click the **Configuration** tab.



In the available options box, select any options your copier has and select **Add**.

When you are finished, click **Apply** and then **OK**.