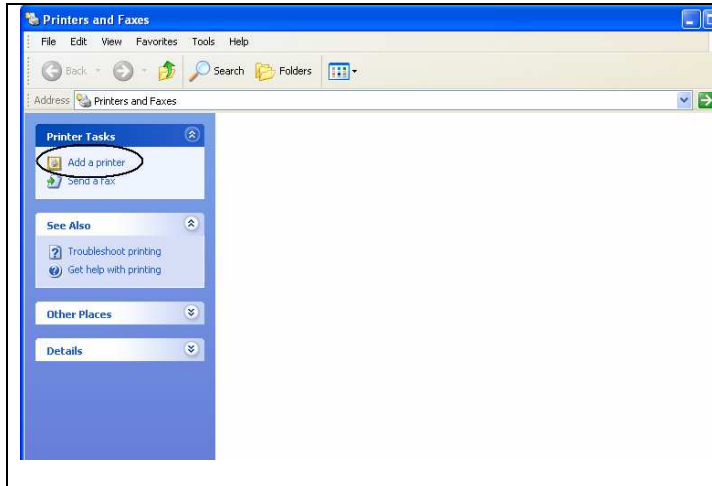


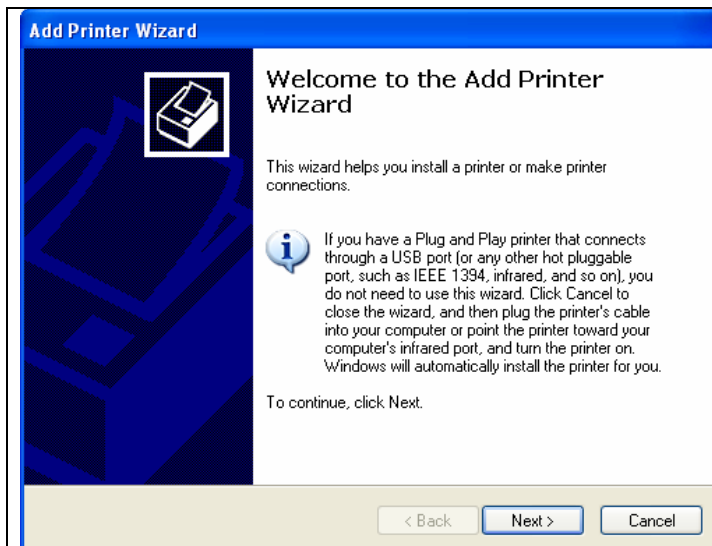


285 Kenmore Ave.
Buffalo, NY 14223

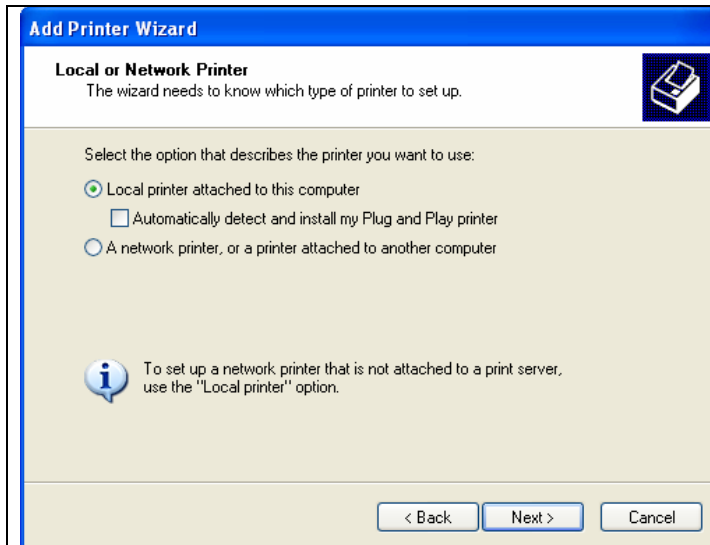
(716) 803-9000
www.centralbiz.biz



Click **Start** then **Printers and Faxes** and click the **Add Printer** icon.

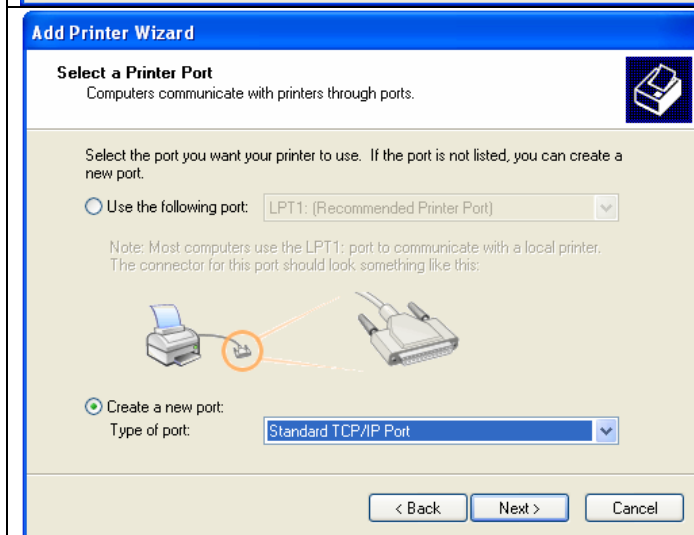


The "Add Printer Wizard" opens, click on **Next**.



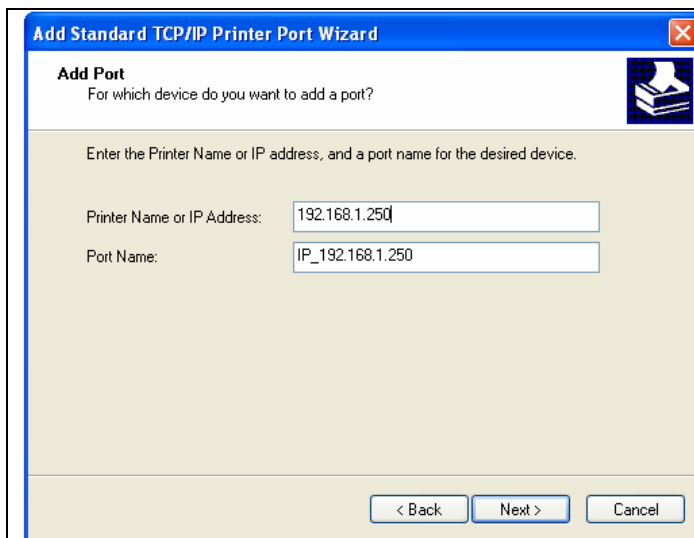
Select "Local printer" and click on **Next**.

(Make sure the box for 'Automatically detect and install my Plug and Play printer' is unchecked.)



Select **Create a new port**.

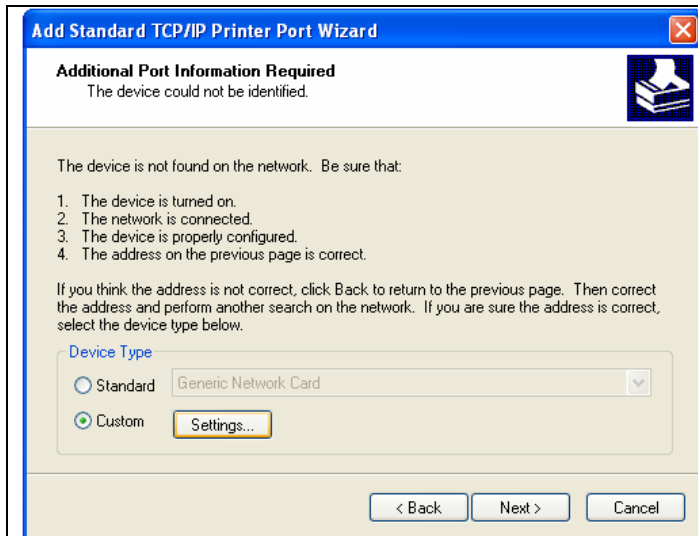
Where it says "Type of port", change that to **Standard TCP/IP Port**.



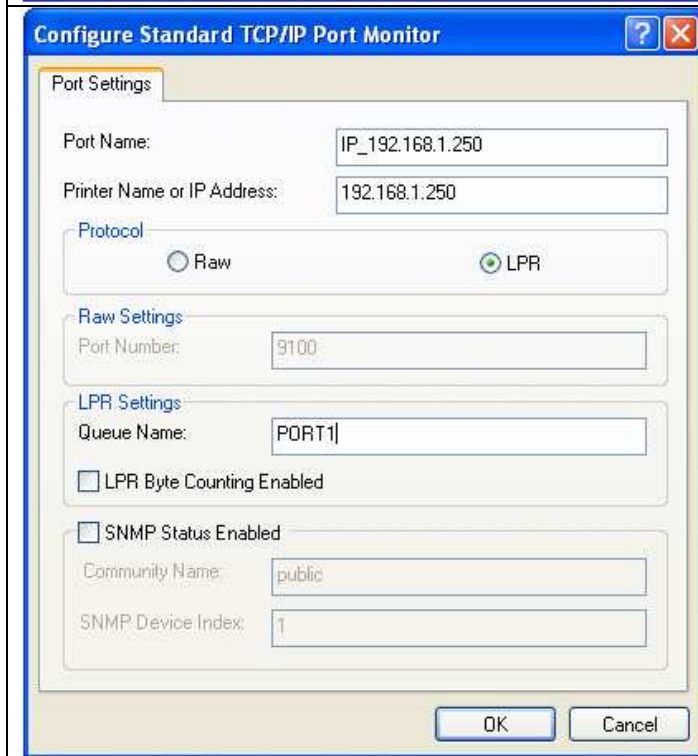
The 'Add Standard TCP/IP Printer Port' Wizard will start. Just click **Next**.

Type in the IP address of the copier in the first box. The 2nd box will fill itself out automatically.

Click Next

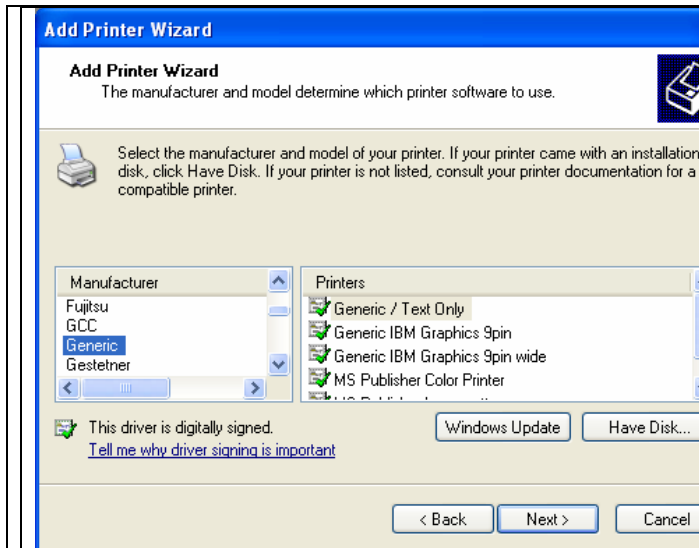


Choose 'Custom' and then press **Settings**.

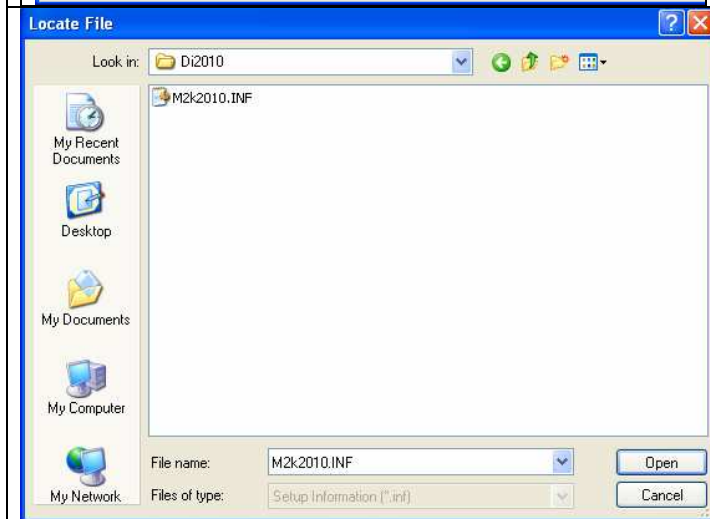


Choose 'LPR' under the Protocol setting. Then further below in the LPR Queue name box, type in: **PORT1**

Press OK.
Press Next.
Press Finish.



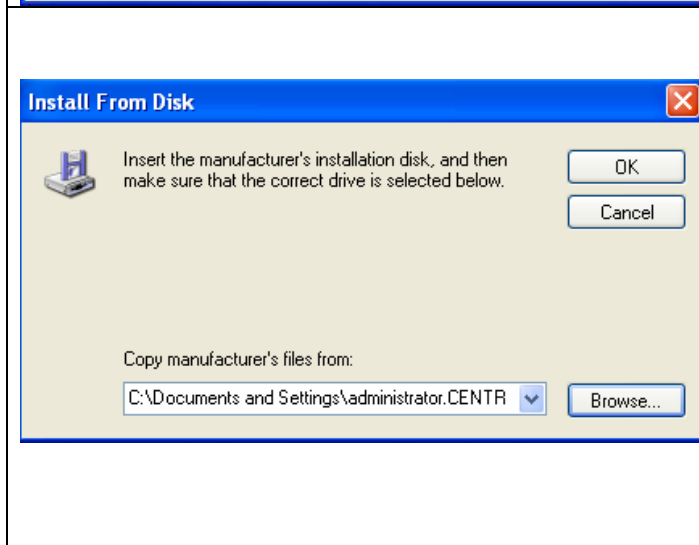
Click on **Have Disk**.



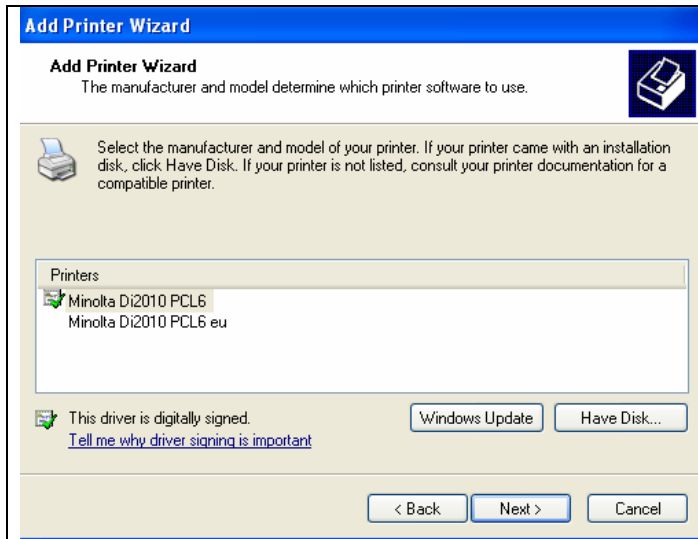
Double the folder that is the model of your printer.

For example, if your printer is a Di2010, click the Di2010 folder.

Click **Open**.

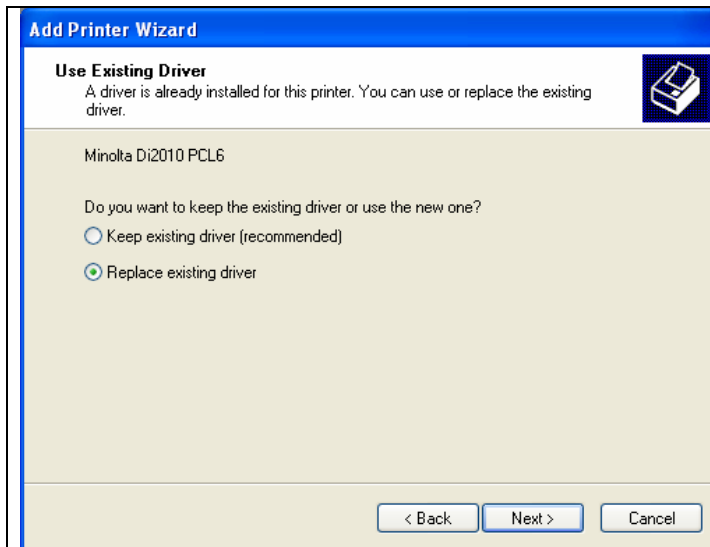


Click **OK**.



Click on **Next**.

Note: The driver with the “eu” at the end is for Europe. Do not select that one.



Select **Replace existing driver**.

Click on next.

Note: If you do not see this screen, skip this step and move to the next.

Add Printer Wizard

Name Your Printer
You must assign a name to this printer.

Type a name for this printer. Because some programs do not support printer and server name combinations of more than 31 characters, it is best to keep the name as short as possible.

Printer name:

Do you want to use this printer as the default printer?

Yes
 No

< Back Next > Cancel

Type in a name for the printer.

Click **Next**.

Add Printer Wizard

Printer Sharing
You can share this printer with other network users.

If you want to share this printer, you must provide a share name. You can use the suggested name or type a new one. The share name will be visible to other network users.

Do not share this printer
 Share name:

< Back Next > Cancel

If you are installing the printer to a workstation, then select **Do not share this printer**.

If you are installing the printer onto a server, then select **Share** and type in a share name.

Add Printer Wizard

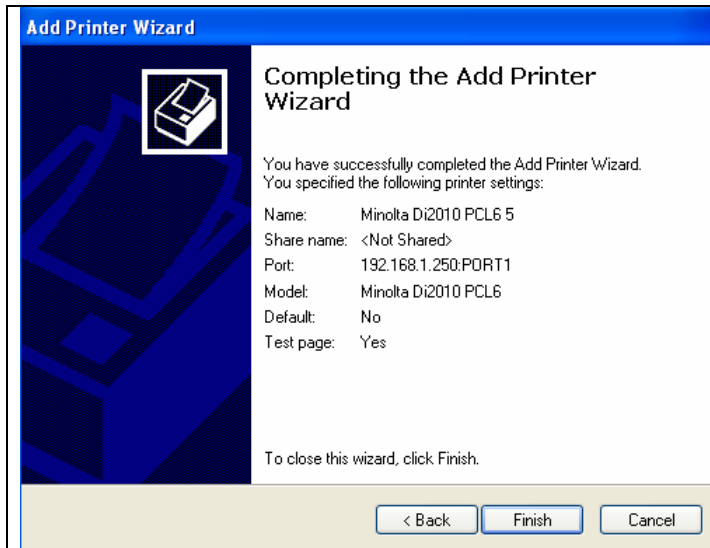
Print Test Page
To confirm that the printer is installed properly, you can print a test page.

Do you want to print a test page?

Yes
 No

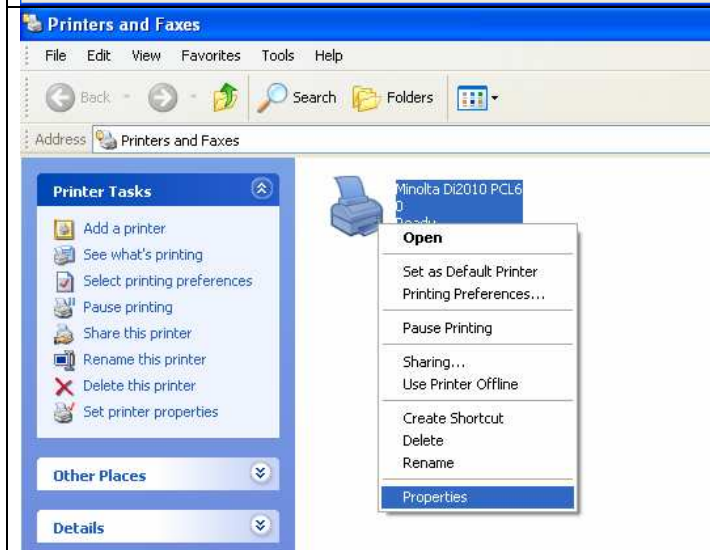
< Back Next > Cancel

Select **Yes** for a test page and click **Next**.



Click **Finish** to close the Wizard.

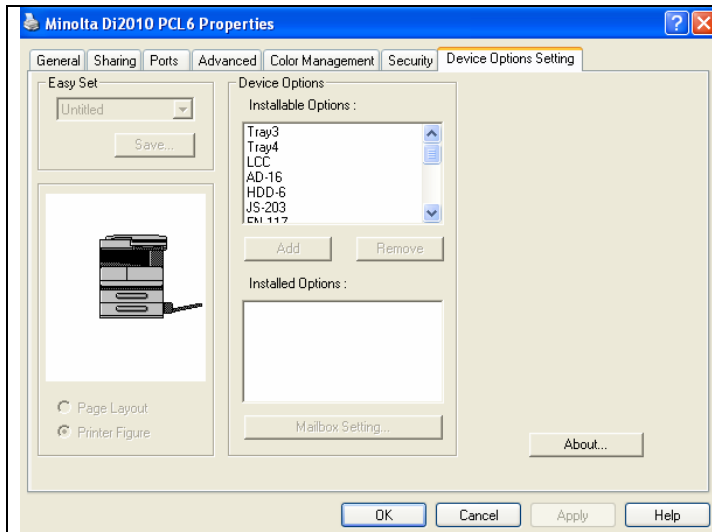
Note: “Digital Signature Not Found” message may appear. Just click **Yes** to complete the installation.



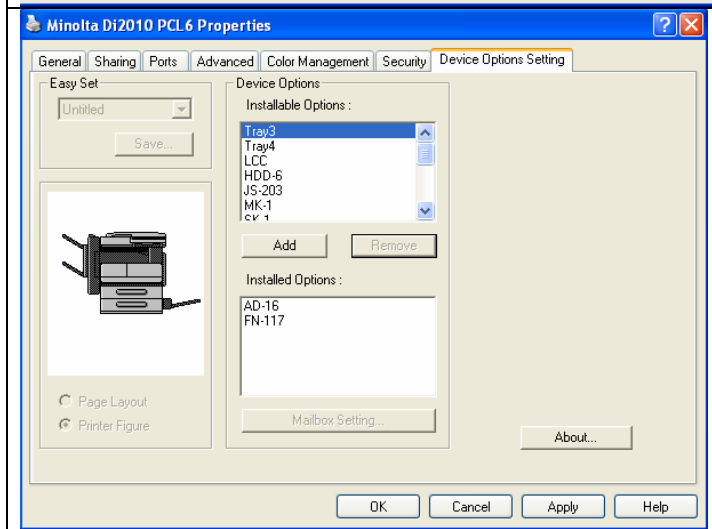
Now we need to configure the printer driver for any installable options you may have.

Click **Start** then **Printers and Faxes**.

Right click the printer you have just installed and select **Properties**.



Click the **Device Options** tab.



In the installable options box, select any options your copier has and select **Add**.

When you are finished, click **Apply** and then **OK**.